



High Speed Dome Indoor/ Outdoor Network Camera

MPEG4, CCD, Low Light, Temperature Controlled, NTSC

For your most critical video surveillance applications.


Model
550260

The INTELLINET NETWORK SOLUTIONS™ High Speed Dome Indoor/Outdoor Network Camera is the ideal solution for your demanding security surveillance and remote monitoring applications. It can be used for day or night viewing, and comes in a rugged, tamper-proof enclosure for protection against dust and heavy jets of water, complete with a heater and blower to keep it in proper operating temperatures.

Superior Video Quality

The High Speed Dome Camera uses a Sony Super HAD CCD image sensor, providing TV-like quality in bright or low light conditions, capturing color video in light conditions down to 0.0007 lux. It supports both Motion JPEG and MPEG4 video compression, allowing you to use the right one for your particular needs. Motion JPEG is required as evidence in many countries, whereas MPEG4 is a lot more efficient in the use of network bandwidth and disk storage space.

Powerful Zoom

The High Speed Dome Camera provides 30x optical zoom capability, making it ideal for security surveillance.

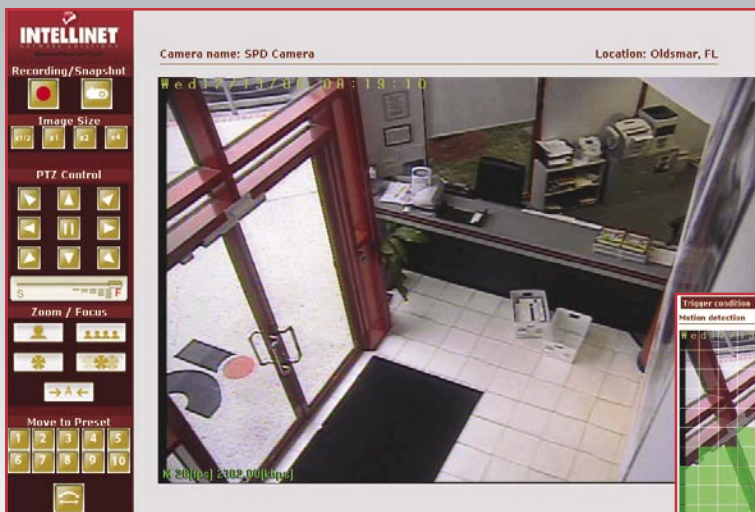
Flexible Control

As rugged as it is, the High Speed Dome Camera provides a precision-engineered 360°-per-second pan operation, which can be configured to patrol (continuous panning) using the preset function. It includes integrated motion detection that automatically disengages to prevent false alarms, and includes a "grid setup" function which is typically only available with video recording software.

Lifetime Warranty

Strict manufacturing standards ensure the highest quality in all INTELLINET NETWORK SOLUTIONS products. All items carry a full Lifetime Warranty — the strongest quality commitment anyone can make.





Web browser live view



Motion detection grid



Model
550260

Features

- Tamper-proof outdoor housing with integrated heater and blower
- IP66 rated: dust-tight and protection against heavy seas
- 1/4" SONY Super HAD CCD image sensor for excellent image quality
- Powerful 30x optical zoom module with auto-focus and 10x digital zoom for a total 300x zoom
- Pan speed of 360° per second
- 20 programmable preset positions
- 20-step guard tour, programmable
- Supports extreme low light conditions, minimum 0.0007 lux with DSS
- Engages black and white mode automatically below 0.7 lux
- Supports image resolutions up to 720 x 480 (D1)
- Up to 30 frames per second in all image resolutions
- Supports MPEG4 streaming and MJPG
- Supports MPEG4 Video streaming with CBR (constant bit rate) and VBR (variable bit rate) modes
- Controllable frame rate
- Integrated motion detection with pre- and post-alarm video buffering
- Motion detection grid featuring 330 individual detection areas which can be activated or deactivated individually
- Event-triggered FTP and e-mail upload of videos
- Terminal block for external sensors or external alarm devices
- Video access through any standard Web browser
- Integrated HTTP Web server supporting 50 simultaneous user connections
- Integrated e-mail, FTP, DDNS and DHCP client
- Includes Windows-based camera manager software (IP installation and upgrade)
- Lifetime Warranty

Specifications

STANDARDS

- IEEE 802.3 (10Base-T Ethernet)
- IEEE 802.3u (100Base-TX Fast Ethernet)
- IP66 (Ingress Protection)

GENERAL

- Supported image resolutions: 720 x 480, 640 x 480, 720 x 240, 640 x 240, 352 x 240, 320 x 240
- Protocols supported: HTTP, TCP, UDP, SMTP, UDP, FTP, ARP, DNS, DynDNS
- Certifications: FCC Class A, EMC: EN61000-3-2, EN61000-3-3, EN55022, EN55024

IMAGE SENSOR & LENS SPECIFICATIONS

- 1/4" SONY Super HAD CCD sensor
- Total pixels: 410K, 811 (H) x 508 (V)
- Horizontal resolution, more than 540 TV lines
- S/N ratio: more than 50 dB
- Video output: 1.0 Vp-p (75 Ohms, Composite)
- Automatic white balance control
- Image Control, Brightness, Contrast, Saturation, Hue
- Minimum illumination color: 0.7 Lux at 30IRE / 0.1 lux (DSS)
- Minimum illumination black and white: 0.1 lux (Day & Night Mode) / 0.0007 lux (DSS)
- Shutter speed: 1/120 – 1/60,000 sec.
- Focal length 3.3 – 99 mm
- Pan rotation angle: 360°
- Tilt rotation angle: -2° – 90°
- Angle of view: approx. 58.17° (Wide), approx. 2.2° (Zoom)
- Maximum relative aperture: F1.6

ENVIRONMENTAL

- Dimensions:
 - Height: 302 mm (11.8 in.)
 - Diameter: 216.8 mm (8.5 in.)
- Weight:
 - Housing and dome drive unit: 3.0 kg (6.6 lbs.)
 - Wall mount bracket: 0.9 kg (1.9 lbs.)
- Operating temperature: -40 – 60°C (-40 – 140°F)
- Operating humidity: 0 – 90% RH, non-condensing
- Storage temperature: -5 – 50°C (23 – 122°F)

POWER

- External power adapter:
 - Input: 240 V AC, 50 Hz (US version: 110 V AC, 60 Hz)
 - Output: 24 V AC, 1.5 A
- Power consumption: 18 Watts (maximum)

SYSTEM REQUIREMENTS

- Windows 2000, XP
- Computer with network connection
- Web browser support:
 - MS Internet Explorer 5.0 or higher (ActiveX)
 - Netscape Navigator, Mozilla, Firefox, Opera (Java for JPEG only)

PACKAGE CONTENTS

- High Speed Dome Indoor/Outdoor Network Camera with external cable
- User manual
- Wall mount bracket
- Software CD (Camera Manager Program for IP installation, upgrade and user manual)

For more information on INTELLINET NETWORK SOLUTIONS products, consult your local dealer or visit www.intellinet-network.com.



Copyright © INTELLINET NETWORK SOLUTIONS