

Panasonic

ideas for life

BL-C10 BL-C30

Network Camera



BL-C30
Wireless Type



Features and Performance that Meet Your Monitoring Needs
Introducing a Compact Network Camera



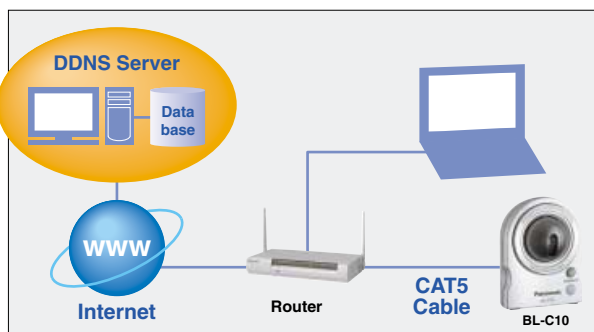
BL-C10
Wired Type

What is a network camera?

A network camera lets you view real-time images over the Internet*¹. In other words, you can monitor your home or office from a distant location using a PC*² or mobile telephone*³. Panasonic's network camera even features a built-in Web server function*⁴, so the camera does not have to be connected to a PC.

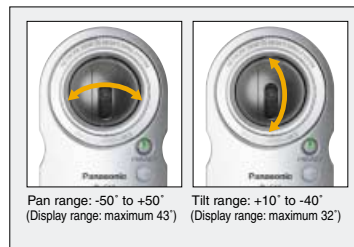
Just Plug'n Play, Easy Installation

IP address setting, Port Forwarding and DDNS*⁵ will be setup automatically with Setup CD-ROM.



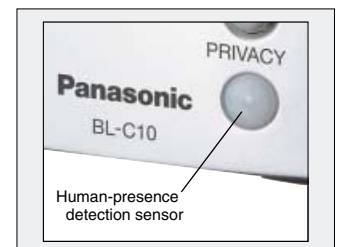
Compact camera with remote Pan/Tilt control

This ultra-compact camera is only about 36% the overall size of our previous model. The lens can be panned (moved horizontally) or tilted (vertically) from a remote location via a PC or mobile telephone.



Built-in sensor detects the presence of a person*⁶

The built-in sensor detects infrared rays emitted from a heat source, such as a person, and sends a signal to begin recording. The camera can also send an e-mail to your computer or mobile phone with captured image attached.



A wealth of Network Camera control functions

Pan Scan

You can move the Network Camera in a horizontal direction.

Tilt Scan

You can move the Network Camera in a vertical direction.

Remote Pan/Tilt operation

Changing the direction of the Network Camera on a web browser. Pan: -50° to $+50^{\circ}$ /Tilt: $+10^{\circ}$ to -40°

Preset Positioning

Preset Positioning allows you to change the direction of the camera by one click.

Click to Center

When you click the certain point on the Single Camera screen, the point is centered on the image.

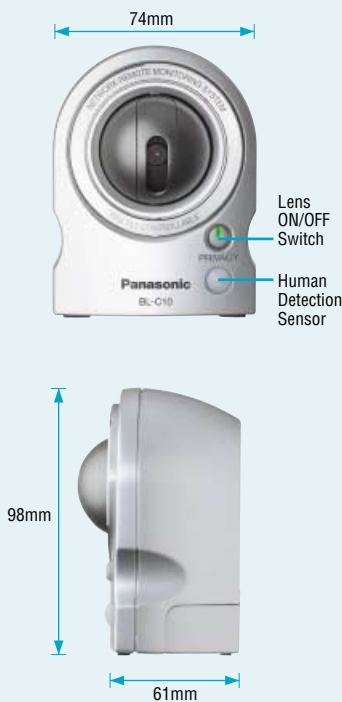


Multi-image Display



- View up to 12 cameras simultaneously

Appearance of BL-C10



Specifications

	BL-C10	BL-C30
Type:	Indoor Wired	Indoor Wireless
Max. User Access:	20	
Pan:	50° left and right	
Tilt:	+10° up to -40° down	
Max. Pan/Tilt Speed:	Pan: 50 deg/sec, Tilt: 50 deg/sec	
Preset Positioning:	8	
Image Sensor:	CMOS, 1/4 inch	
Number of Pixels:	320,000 pixels	
Horizontal View Angle:	43°	
White Balance:	Auto/Manual	
Focus:	Fixed 0.5 m (20 inches) – Infinity	
Caliber Ratio:	F2.8	
Exposure:	Auto	
Illumination:	1-10,000 lux	
Video Resolution:	640 x 480, 320 x 240 (default), 160 x 120	
Video Compression:	JPEG/3 Levels	
Magnification:	100% or 150%	
Frame Rate:	Max. 7.5 frames/sec. (640 x 480) Max. 15 frames/sec. (320 x 240) Max. 15 frames/sec. (160 x 120)	
Authentication:	ID/Password authentication for Administrator and General user (up to 50)	
Trigger of Image Transfer:	Triggered by Built-in sensor alarm and/or timer	
Built in Sensor:	Pyroelectric Infrared Sensor Detective Angle: Vertical 30 deg/Horizontal 85 deg Detective Range: Up to about 5 m (16 feet)	
Image Transfer Protocol:	SMTP, FTP	
Image Buffer:	about 250 frames (320 x 240, Image Quality=Standard)	
Upgrade:	Firmware Upgradable	
Max. Bandwidth Control:	0.1/0.2/0.3/0.5/1.0 Mbps/Unlimited	
Network Connection:	Ethernet 10/100 Base-TX	Ethernet 10/100 Base-TX Wireless (IEEE802.11b/g)
Wireless:		
Frequency:	—	2.412 – 2.462 GHz
Number of Channel:	—	11
Transmission Speed:	—	54 Mbps
Security:	—	WEP (64/128/152 bit), SSID
Mounting:	Wall mount, tripod mount	
Accessories:	AC adaptor and AC cord, Setup CD-ROM	
Weight:	170 g (0.37 lb.) (Only the unit)	200 g (0.44 lb.) (Only the unit)
Dimensions (H x W x D):	About 74 mm (2.91 inches) x About 98 mm (3.86 inches) x About 61 mm (2.40 inches)	About 98 mm (3.86 inches) x About 74 mm (2.91 inches) x About 73 mm (2.87 inches)
Humidity:	20-80% RH, non-condensing	
Operation Temperature:	5-40°C, indoor only	
Consumption:	4W	6.4W
Voltage:	AC Adaptor Input: 120V AC / Output: 9V DC	AC Adaptor Input: 120V AC / Output: 12V DC

*2 System Requirements For PC Control

Operating System:	Windows®98SE, Windows®2000, Windows®XP, Windows®Me
Network Protocol:	HTTP, FTP, TCP, UDP, IP, ARP, ICMP, DHCP, DNS, DDNS, SMTP, POP3, NTP
Web Browser:	Microsoft®Internet Explorer 6.0 or later

*1 The remote monitoring via the Internet requires static global IP address from your Internet provider. PPPoE connection requires a suitable router. For connecting via the Internet, it is necessary to use functions (port forwarding etc.) such as a router to access the camera from the Internet. Refer to the instructions of the router.

*2 See system requirement for PC control.

*3 Can be used only by mobile phones that are equipped with a Web browser and support the JPEG format. Information on compatible models is given on Panasonic Network Camera support web site.

*4 This function provides HTML documents (for viewing by Web browsers) over networks.

*5 Panasonic offer free DDNS (Direct Domain Name System) service. You can access the camera through the internet without static global IP address.

*6 The detection range is 5 meters, 30° in the horizontal direction, and 85° in the vertical direction.

Note:

- Microsoft®, Windows® and Windows®Me are either registered trademarks or trademarks of Microsoft Corporation in the United States and/or other countries.
- Windows® is Microsoft® Windows® operating system.
- All trademarks referred to in this catalog are the property of their respective companies.