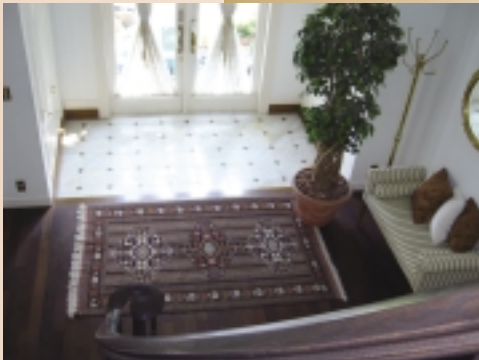




\* This logo mark is issued by the IPv6 Ready Logo Program Committee, an IPv6 promotion group established mainly by the IPv6 Forum.

## Keep an Eye on the House from Anywhere over the Internet!

Do you sometimes worry about things at home while you're at work or on vacation? Panasonic network cameras let you monitor your room over the Internet from wherever you are. They even let you pan, tilt and zoom the cameras by remote control. And you can choose the video format to match the Internet connection and your viewing needs. Let Panasonic network cameras keep an eye on things - anytime, anywhere - so you can relax and enjoy yourself.



Home monitoring

Monitoring various locations



Kid's room



Terrace



Pet activity



BL-C131

See There  
When You Can't Be There™

### System Diagram

Panasonic network cameras support UPnP and DDNS, so it's easy to set up the network and access cameras over the Internet with an ID and password.



# Feel Safer with Panasonic



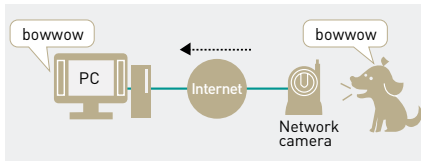
BL-C111 BL-C131

## ENTRANCE



### Captures suspicious sounds Built-in Microphone

Sounds picked up by the built-in microphone can be heard through the PC. Video monitoring with sound enhances security by providing additional information that images cannot convey.



### Alerting Yourself when Changes Occur

The combination of a built-in human detection sensor that responds to heat and a motion detection function that responds to a preset camera threshold or sensitivity detects even slight motions. Captured images can also be stored temporarily in the camera\*1 or sent to you by e-mail\*2 or FTP data transfer\*3.

\*1 A maximum of approximately 250 images (320 x 240 pixels) can be stored in the camera.

\*2 PDP before SMTP authentication and SMTP authentication (PLAIN LOGIN and CRAM-MD5) are supported.

\*3 The sensor's detection history can also be e-mailed to you once a day at a preset time.

#### Human detection function



#### Motion detection function



## VARIOUS PLACES



### Monitors large rooms entirely Remote Pan/Tilt and Zoom Control

The camera angle can be varied by remote control to monitor over wide areas. You can use the zoom function\* to take a closer look at certain places.

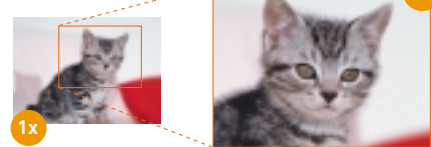
\* This is a digital zoom function and cannot be used from a cell phone.

#### Pan and tilt control



Pan (display range: 143° max)  
Tilt (display range: 82° max)

#### 10x digital zoom



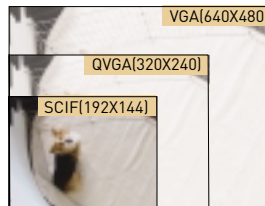
\*Area is multiplied by 10x.

## PET ACTIVITY



### Enjoy comfortable, versatile monitoring. Simultaneous MPEG-4 and JPEG

Cameras simultaneously send MPEG-4 images in three resolutions (VGA, QVGA, and SCIF), and JPEG images in the same three resolutions in favour motion, standard, and favour clarity image-quality types. MPEG-4 is recommended for viewing smooth motion images, and JPEG is recommended for recording higher quality images.

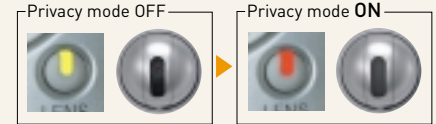


\*Size comparisons are simulated.

## Other Features

### Privacy Mode

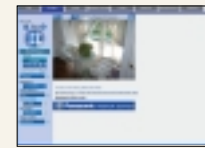
When you return home, just press a button to cover the lens and protect your privacy. System administrators can also do this over the network.



### Full Screen Display

The monitoring image is easier to see because it fills the entire screen.

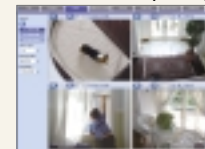
#### Normal mode



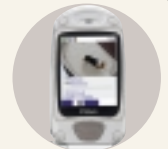
#### Full screen mode



### Multi-camera capability



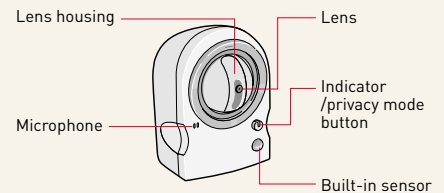
### Cell Phone Monitoring



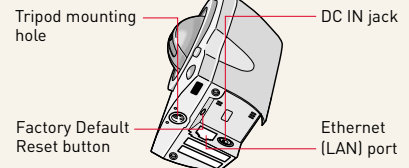
\*Up to 16 windows can be viewed at once

## Part Names

### Front View



### Bottom View



## Specifications [BL-C131/BL-C111]

| Server  |   | Camera                   |   | Wireless[BL-C131 only] |  |
|---|---|--------------------------|---|------------------------|--|
| Image Compression   | JPEG [3 levels], MPEG4  | Zoom                     | 10x digital zoom [by area]                                    | Standards              | 802.11 b/g   |
| Video Resolution  | 640 x 480, 320 x 240 [default], 192 x 144   | Viewing Angle            | Horizontal: 49° [total 149°], vertical: 37° [total 87°]       | Antenna                | Diversity  |
| Image Quality   | JPEG [favor clarity, standard, favor motion], MPEG-4  | Pan Angle                | -50° up to +50°   | Number of Channels     | 11ch. [USA], 13ch. [Others]  |
| Frame Rate*1  | Max. 30 frames/sec [640 x 480*, 320 x 240 or 192 x 144]   | Tilt Angle               | -40° up to +10°   | Transmission Speed     | Up to 54 Mbps.   |
| Security  | User ID/password  | Revolving Speed          | Pan: max. 50°/sec<br>Tilt: max. 50°/sec                       | Security               | SSID, WEP (64/128/152 bit), WPA-PSK [TKIP], WPA2-PSK [AES]   |
| Supported Protocols   | IPv4 / IPv6 Dual-Stack<br>IPv4: TCP, UDP, IP, HTTP, FTP, SMTP, DHCP, DNS, ARP, ICMP, POP3, NTP, UPnP™, SMTP Authentication, RTP, RTSP, RTCP<br>IPv6: TCP, UDP, IP, HTTP, FTP, SMTP, DNS, ICMPv6, POP3, NTP, RTP, RTSP, RTCP | Sensor Type              | 1/6-inch CMOS sensor, approx. 320,000 pixels                  | Terminal               |  |
| User Access Limit   | Max. 30 simultaneous accesses   | Lens Focal Point         | Fixed (focal range: 0.3 m to infinity)                        | Network Interface      | Ethernet (10 Base-T/ 100 Base-TX)  |
| Buffered Image*3  | Approx. 250 images (320 x 240)<br>*standard image quality *with time display  | Lens Brightness          | F2.8  | General                |  |
| Image Transfer Method   | SMTP*4, FTP, HTTP   | White Balance            | Auto/manual/hold  | Temperature            | Operation: +5°C to +40°C (+41°F to +104°F)<br>Storage: 0°C to +50°C (+32°F to +122°F)                                  |
| Image Buffer/Transfer Triggers  | Timer, sensor, motion detection   | Exposure                 | Auto  | Humidity               | Operation: 20 % to 80 % [No Condensation]<br>Storage: 20 % to 90 % [No Condensation]                                   |
| *1 The frame rate may decrease depending on the network environment, PC performance, and image quality. |   | Required Light Intensity | 10 to 10,000 lux [in colour night view mode: 3 to 10,000 lux] | Dimension [H x W x D]  | BL-C111: 98 x 74 x 61 mm [3 7/8 x 2 15/16 x 2 3/8 inches]<br>BL-C131: 98 x 74 x 73 mm [3 7/8 x 2 15/16 x 2 7/8 inches] |
| *2 For MPEG-4 only. Not applicable to JPEG.   |   | Audio                    |   | Weight [Only the Unit] | BL-C111: 180 g [0.4 lb]<br>BL-C131: 210 g [0.46 lb]  |
| *3 The maximum number of frames changes depending on the resolution and image quality.                  |   | Audio Communication      | Half-duplex one-way communication [transceiver system]        | Power Supply           | Input 100 - 240 V AC, Output 9 V DC  |
| *4 PDP before SMTP authentication and SMTP authentication [PLAIN LOGIN and CRAM-MD5] are supported.     |   | Audio Play Method        | Play with ActiveX   | Consumption            | BL-C111: 4.0 W, BL-C131: 6.0 W   |
|   |   | Audio Compression        | ADPCM 32 kbps   |                        |  |
|   |   | Audio Bandwidth          | 300 Hz-3.4 kHz  |                        |  |
|   |   | Audio Input              | Built-in microphone   |                        |  |

**Panasonic**®

<http://panasonic.co.jp/pcc/products/en/netwcam/>

01106SP-C111/C131-LT

All pictures simulated.

Design and specifications are subject to change without notice.

This unit is designed for use in the United States of America. Sales or use of this product in other countries may violate local laws.